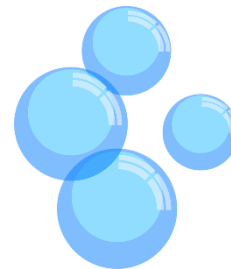




24th April 2026 www.millrytheinfants.co.uk



MILL RYTHER INFANT SCHOOL NEWSLETTER

Safe – Honest – A Community – Resilient - Kind

Message from Mrs Tighe

Welcome back to the Summer Term!

As I'm writing this there are children happily playing on the grass and enjoying the sunshine. Mrs Spraggs and the lunchtime team have been doing a wonderful job of closely observing which toys and games are most popular to keep children safe and happy during the middle of the day. The Growing Together gardening team have visited to harvest potatoes and begun growing some strawberry plants alongside the children. Our lunchtime menu has also changed and now includes a sandwich offer. Please make sure you are ordering in advance.

Our transition planning has begun and we were delighted to welcome Mrs Maxwell and Mrs Mott from Mill Rythe Juniors into our school this week. Both of them commented how polite and engaged our Year 2 children are in learning and they are looking forward to further visits to get to know the children better. It is lovely that the hard work of our children and staff is recognised by our campus community.

Whole-school improvement

Pupil Progress meetings took place before Easter and it was lovely to hear how well the staff know your children's individual learning needs. Our data is progressing in line with targets set across the year and our staff are beginning their training to start 'Kinetic Letters'. Kinetic Letters is a handwriting scheme which was funded by our **amazing** PTFA. This will support our children in developing secure posture and presentation skills when writing, which is a key focus for our pupils across the school. Your support of PTFA events is making a real-life difference to your child and their peers – well done and thank you!

Our new values are quickly becoming part of the everyday language of the school. The children are enjoying earning Dojo Points for showing our values alongside everyday classroom expectations. The children are also continuing to earn 'stars in a jar' together. I am working alongside the Primary Behaviour Service to write our new Behaviour Policy and would appreciate your thoughts. A link will be emailed out to a parent survey shortly.

We have vacancies on our Governing Body. Our Governors are a skilled group of community members who work together to support the school to ensure our children get the best school experience possible. If you are interested in joining then please speak to Mrs Tighe.

Allergy Awareness week

This week is Allergy Awareness Week. To build on our previous learning about how we can keep people with allergies safe, the children are learning about different food groups that can cause allergies and how to help someone who is having an allergic reaction by telling an adult. We have been using the resources from <https://www.allergyschool.org.uk/> which are aimed at explaining in a simple child-friendly format all about allergies.

Just as a reminder – we do not allow nuts or peanuts within our school and have strict allergy management protocols for children with allergies. Thank you for your support.

Safeguarding

Please can you be cautious when entering or exiting our school office.

Our admin team are often away from the office sharing messages, supporting children and liaising with staff.

Please do not allow anyone to enter the building after you. It is essential that we know who is here and how to best support any visitors. We must keep everyone safe and also help any queries as quickly as possible. Thank you.

In assemblies we have discussed the meaning of fair, hard work, loyalty and sharing and how we could show these in our school. During our Wellbeing Wednesday assemblies we have been 'safety detectives' and spotted hazards in a typical home, identifying how we would react safely. For example, spotting trip hazards, loose cables and sharp objects and when we need an adult to help us to stay safe. The children have also identified safe and unsafe behaviours at playtimes and lunchtimes to help them make safe choices and understand how a friend should behave towards them.

Hayling Island Arts Trail



The 2026 Hayling Arts Trail
9th and 10th May 2026

There will be painters, ceramicists, jewellers, glass artists, fabric artists, or other artistic disciplines on display through the weekend of 9th and 10th May. Put it in your diary NOW, and the artists look forward to welcoming you to their venues

Communication

We have now completed our transfer to Arbour and will be using this system to send emails, newsletters and contact specific to your children. Unfortunately several of our parents have not yet logged in to the system and may miss important information. If the link you have received is no longer valid then please get in touch with the school office.

Mrs Tighe's Lunch Club

I have had lovely lunches with:

Tommy, Reuben, Lucca, Hugo, Mariia, Lorena, Tilly, Joseph, George, Alex, Teddy, Ned, Robbie, Lilly, Violet, Isla, and Rory. The children this week were very proud of their Maths learning and were all happy to show me the parts of writing they had to really think about!

Whole School attendance: 95.5%

Class attendance winner: Rainbowfish 96.8%



Important dates

21st-28th April	Allergy Awareness Week	All year groups
1st May	Hayling Island Arts Trail opens – children's display at the library	All year groups
Monday 4th May	Bank holiday – school closed	All year groups
14th May	Class photographs	All classes
22nd May	Non school uniform	All classes
25th-29th May	Half-term	All classes
1st June	Inset day – school closed to pupils	All classes
10th June	PTFA Movie night	All classes – payment through PTFA
12th June	New Behaviour Policy launch – Q+A event	From 9-9.30 Parents only (younger children welcome)
17th July	Year 2 leaver's Party (during school day)	1pm-3pm – Year 2 children only
22nd July	Last day of term	Finish at 3.10 as usual